



TM



# PARTS



# CATALOG





# TABLE OF CONTENTS

<b>Pulleys, Brackets, and Accessories</b> .....	2
AC Components .....	19
Alternator .....	21
Belts .....	24
Brackets .....	25
Crank and Water Pump Pulleys .....	27
Power Steering .....	31
Pulleys and Related Parts .....	36
Serpentine Drive Kits and Parts .....	44

# PULLEYS, BRACKETS AND ACCESSORIES



## WS66103 ALTERNATOR WIRING CONVERSION KIT

**SKU:** WS66103

### Alternator Wiring Conversion Kit

Plug-and-play kit for wiring a 3-wire (stock '73-up GM) internally regulated alternator, into vehicles original equipped with an externally regulated GM alternator (such as '62-'72 Cadillacs). Includes adapter plug for alternator and external-regulator-elimination-plug for the connector that used to plug into the external regulator.

[Read More](#)

**Price:** \$45.00

## PB82821 6-RIB SERPENTINE ALTERNATOR BELT - SHORTER BELT FOR 'C'-TYPE BRACKET

**SKU:** PB82821

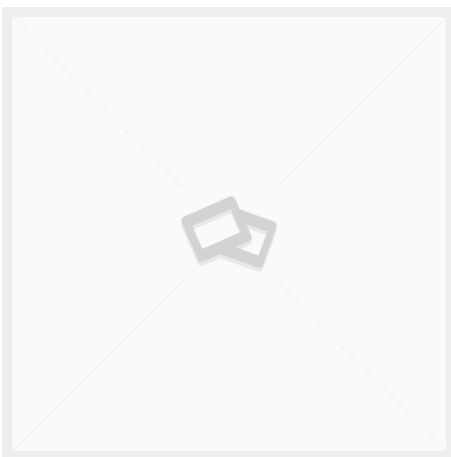
## 6-RIB SERPENTINE ALTERNATOR BELT

## ALTERNATOR AND WATER PUMP BELT FOR CADCO SERPENTINE SYSTEM

This belt drives the alternator and water pump, and fits the [PB18763](#) (3-belt) serpentine pulley kit and the ProCharger kit, with mild steel or stainless steel 'C' type brackets.

[Read More](#)

**Price:** \$45.00



## PB82820 6-RIB SERPENTINE ALTERNATOR BELT - STANDARD LENGTH

SKU: PB82820

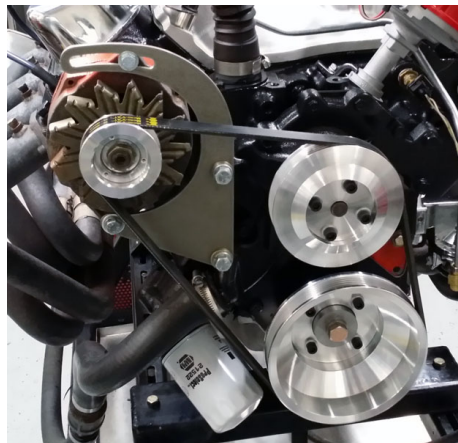
## 6-RIB SERPENTINE ALTERNATOR BELT

## ALTERNATOR AND WATER PUMP BELT FOR CADCO SERPENTINE SYSTEM

This belt drives the alternator and water pump, and fits the [PB18763](#) (3-belt) serpentine pulley kit and the ProCharger kit, with stock or billet aluminum alternator brackets.

[Read More](#)

Price: \$45.00



## PB71773 SERPENTINE PULLEY AND BILLET BRACKET KIT WITH POLISHED ALUMINUM 140 AMP ALTERNATOR PB71773

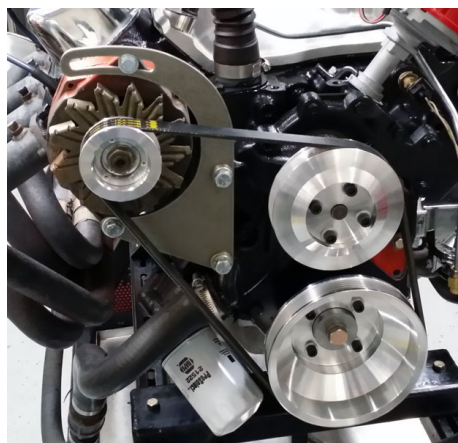
SKU: PB71773

This kit includes billet aluminum crank and water pump pulleys, SS crank and water pump pulley bolts, our billet aluminum alternator bracket kit, and a polished aluminum 140-Amp 1-wire alternator with billet aluminum pulley.

Note: Includes polished alternator, rather than the un-chromed version in the picture.

[Read More](#)

Price: \$975.00



## PB71772 SERPENTINE PULLEY AND BRACKET KIT WITH CHROME 105 AMP ALTERNATOR

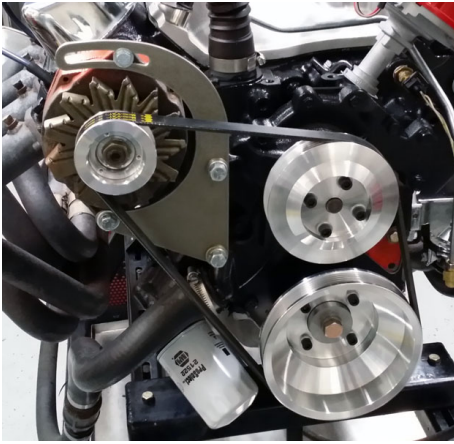
SKU: PB71772

This kit includes billet aluminum crank and water pump pulleys, SS crank and water pump pulley bolts, our stainless alternator bracket kit, and a chrome 105-Amp 1-wire alternator with chrome pulley.

Note: Includes chrome alternator, rather than the un-chromed version in the picture.

[Read More](#)

Price: \$625.00



## PB71771 SERPENTINE PULLEY AND BRACKET KIT FOR WATER PUMP AND ALTERNATOR

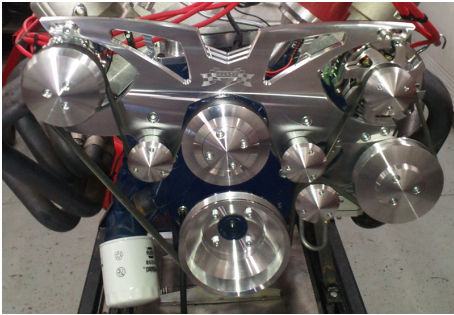
**SKU:** PB71771

This kit includes billet aluminum crank, water pump, and alternator pulleys, SS crank and water pump pulley bolts, and our stainless alternator bracket kit.

This kit does not include an alternator.

[Read More](#)

**Price:** \$485.00



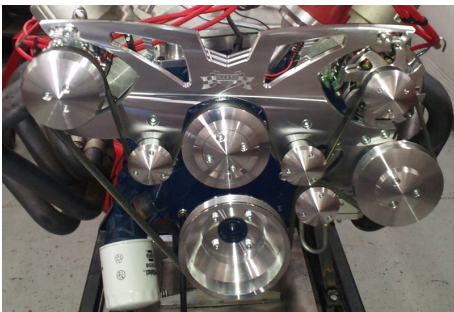
## PB71705 SERPENTINE KIT - WATER PUMP, AC, ALTERNATOR (140 AMP) & POWER STEERING W/ FLOWKOOLER WATER PUMP

**SKU:** PB71705

**Serpentine kit for water pump, AC, 140 Amp alternator, and power steering**

[Read More](#)

**Price:** \$2,560.00



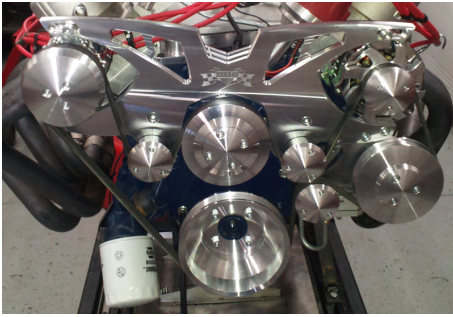
## PB71704 SERPENTINE KIT - WATER PUMP, AC, ALTERNATOR (140 AMP) AND POWER STEERING

**SKU:** PB71704

**Serpentine kit for water pump, AC, 140 Amp alternator, and power steering**

[Read More](#)

**Price:** \$2,460.00



## **PB71702 SERPENTINE KIT - WATER PUMP, AC, ALTERNATOR (105 AMP) & POWER STEERING**

**SKU:** PB71702

**Serpentine kit for water pump, AC, 105 Amp alternator, and power steering**

[Read More](#)

**Price:** \$1,975.00



## **PB71701 SERPENTINE KIT - WATER PUMP, AC, & ALTERNATOR (105 AMP)**

**SKU:** PB71701

**Serpentine kit for water pump, AC, and 105 Amp alternator**

[Read More](#)

**Price:** \$1,675.00



## **PB64500 BILLET ALUMINUM ALTERNATOR BRACKET KIT**

**SKU:** PB64500

[Read More](#)

**Price:** \$275.00



## PB64421 STAINLESS ALTERNATOR BRACKET KIT

**SKU:** PB64421

[Read More](#)

**Price:** \$145.00



## PB64120 HIGH MOUNT ALTERNATOR BRACKET KIT

**SKU:** PB64120

[Read More](#)

**Price:** \$95.00



## PB62510 BILLET SERPENTINE ALTERNATOR PULLEY

**SKU:** PB62510

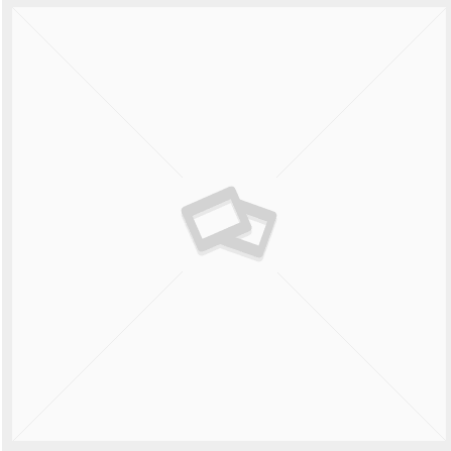
## BILLET SERPENTINE ALTERNATOR PULLEY

## BILLET ALUMINUM 6-RIB SERPENTINE ALTERNATOR PULLEY WITH NOSE COVER.

Fits '62-'85 390, 429, 472, 500, 425, and 368 engines with factory alternator, or anything with a 10SI / 12SI alternator.

[Read More](#)

**Price:** \$110.00



## PB62311 CHROME SERPENTINE ALTERNATOR PULLEY

**SKU:** PB62311

**Chrome serpentine alternator pulley** without fan. Fits most '62-'79 alternators and works with most stock fans.

[Read More](#)

**Price:** \$30.00



## PB62130 DUAL BELT ALTERNATOR PULLEY

**SKU:** PB62130

(steel)

[Read More](#)

**Price:** \$17.00



## PB61523 ALTERNATOR PULLEY AND FAN

**SKU:** PB61523

Billet Aluminum

[Read More](#)

**Price:** \$130.00





## PB61522 ALTERNATOR PULLEY AND FAN

**SKU:** PB61522

Billet Aluminum (curved blade style)

[Read More](#)

**Price:** \$95.00

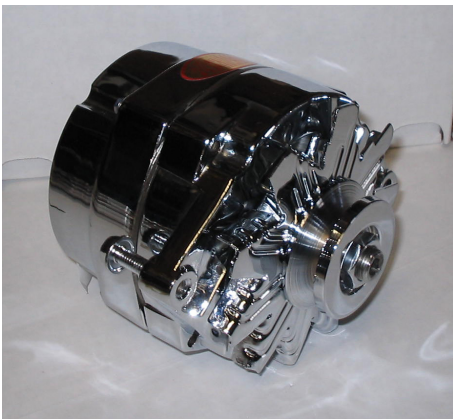


## PB60313 CHROME ONE WIRE ALTERNATOR W/SERPENTINE PULLEY

**SKU:** PB60313

[Read More](#)

**Price:** \$220.00



## PB60312 CHROME ALTERNATOR

**SKU:** PB60312

[Read More](#)

**Price:** \$260.00



## PB54311 POWER STEERING PUMP, CHROME, WITH KEYED SHAFT

**SKU:** PB54311

New Replacement Power Steering Pump, Chrome, with Keyed Shaft for Keyway and Nut Style Pulleys.

Fits all stock '68-'85 472 / 500 / 425 / 368 brackets, and most '63-'67 390 / 429 brackets originally equipped with a standard Saginaw Type 1 style pump. Fits all stock 73-older pulleys and aftermarket keyway type pulleys. Includes reservoir (installed). Finish is black paint on the pump body, with a chrome reservoir. Pulley and bracket not included.

[Read More](#)

**Price:** \$230.00



## PB54211 POWER STEERING PUMP, BLACK, WITH KEYED SHAFT

**SKU:** PB54211

New Replacement Power Steering Pump with Keyed Shaft for Keyway and Nut Style Pulleys.

Fits all stock '68-'85 472 / 500 / 425 / 368 brackets, and most '63-'67 390 / 429 brackets originally equipped with a standard Saginaw Type 1 style pump. Fits all stock 73-older pulleys and aftermarket keyway type pulleys. Includes reservoir (installed). Finish is black paint. Pulley and bracket not included.

[Read More](#)

**Price:** \$195.00



## PB53652 BILLET SERPENTINE PRESS FIT POWER STEERING PULLEY

**SKU:** PB53652

**Power Steering Pulley** Billet Aluminum, smoothie Serpentine, press fit. Made in USA

[Read More](#)

**Price:** \$185.00



## PB53621 STEEL SERPENTINE PRESS FIT POWER STEERING PULLEY

**SKU:** PB53621

**Power Steering Pulley** Steel Serpentine, press fit. Made in USA

[Read More](#)

**Price:** \$80.00



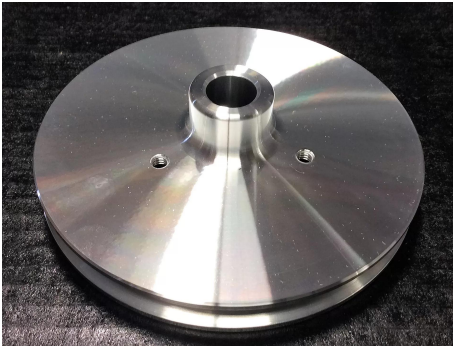
## PB52651 BILLET SERPENTINE KEYWAY POWER STEERING PULLEY

**SKU:** PB52651

**Power Steering Pulley** Billet Aluminum, smoothie Serpentine, Keyway shaft with nut. Made in USA

[Read More](#)

**Price:** \$185.00



## PB51153 BILLET 1 GROOVE PRESS FIT POWER STEERING PULLEY

**SKU:** PB51153

Billet Aluminum, smoothie  
Single groove, Press Fit. Made in USA

[Read More](#)

**Price:** \$130.00



## PB51122 STEEL 1 GROOVE PRESS FIT POWER STEERING PULLEY

**SKU:** PB51122

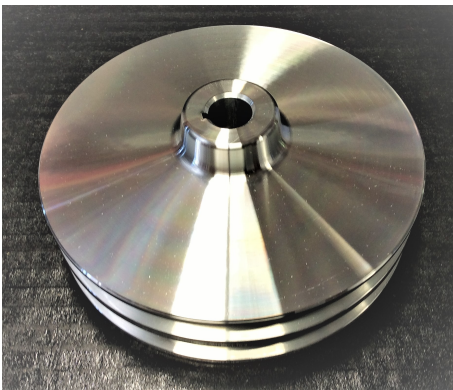
**PB 1515 Power Steering Pulley** Black Steel

Single groove, Press fit style.

Factory replacement for most '74-'85 472 / 500 / 425 / 368 engines.

[Read More](#)

**Price:** \$40.00



## PB50254 BILLET 2 GROOVE KEYWAY POWER STEERING PULLEY

**SKU:** PB50254

Billet Aluminum, smoothie  
Dual groove, Keyway Style. Made in USA

[Read More](#)

**Price:** \$130.00



## PB50223 STEEL 2 GROOVE KEYWAY POWER STEERING PULLEY

**SKU:** PB50223

Dual groove, keyway shaft/ nut or Press fit style.

[Read More](#)

**Price:** \$35.00



## PB50152 BILLET 1 GROOVE KEYWAY POWER STEERING PULLEY

**SKU:** PB50152

Billet Aluminum, 5 holes  
Single groove, keyway shaft/ nut style.

[Read More](#)

**Price:** \$85.00



## PB50151 BILLET 1 GROOVE KEYWAY POWER STEERING PULLEY

**SKU:** PB50151

Billet Aluminum, smoothie  
Single groove, Keyway shaft with nut. Made in USA

[Read More](#)

**Price:** \$130.00



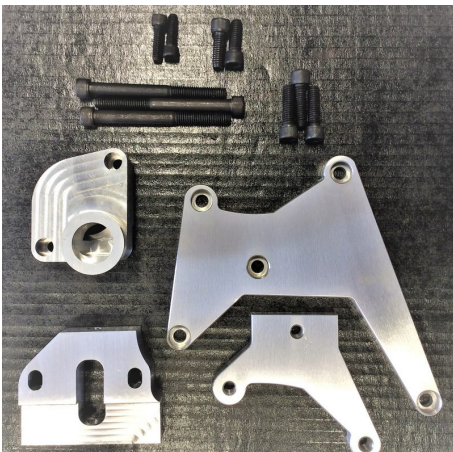
## PB50121 STEEL 1 GROOVE KEYWAY POWER STEERING PULLEY

**SKU:** PB50121

**PB 1515 Power Steering Pulley** Black Steel  
Single groove, keyway shaft/ nut or Press fit style.

[Read More](#)

**Price:** \$40.00



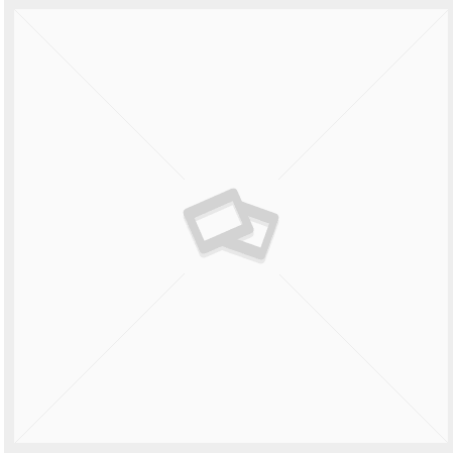
## PB34000 R4 BRACKET KIT BILLET ALUMINUM

**SKU:** PB34000

Billet Aluminum

[Read More](#)

**Price:** \$324.00



## PB32102 R4 CLUTCH COVER ALTERNATE RETAINER FITTING

**SKU:** PB32102

For use with PB32101 clutch cover IF the included retainer fitting can't be used.

[Read More](#)

**Price:** \$20.00



## PB30411 R4 AC COMPRESSOR NEW (NOT REBUILT), SINGLE V-BELT

**SKU:** PB30411

Fits '80-'85 368 CID engines with OE AC brackets and '68-'79 472 / 500 / 425 CID engines with Billet PB34000 aftermarket brackets. Single V-belt groove for use with OE '74-'85 pulleys or Billet PB18021 / PB18022 aftermarket pulleys

[Read More](#)

**Price:** \$440.00



## PB18763 CRANK AND WATER PUMP PULLEYS, MULTI-SERPENTINE

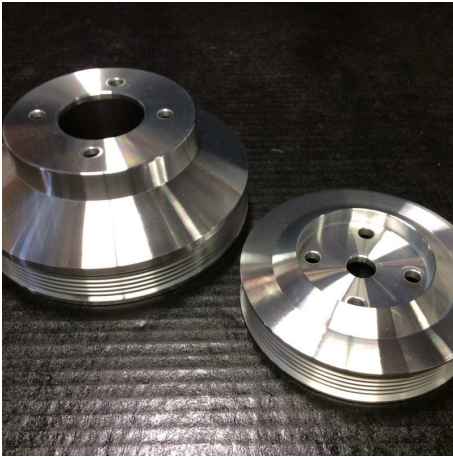
**SKU:** PB18763

**Crank and Water Pump** Serpentine Crank and Water Pump Pulleys  
Made in USA

Billet Aluminum Pulley Set - Triple 6-rib serpentine crank and single serpentine water pump pulley, lines up with stock alternator, PS, and AC spacing. The 3rd belt location can be used to drive other accessories, such as a 2nd alternator, a smog pump, an air compressor, or a ProCharger.

[Read More](#)

**Price:** \$625.00



## PB18760 CRANK AND WATER PUMP PULLEYS, SINGLE SERPENTINE

**SKU:** PB18760

Billet Aluminum Pulley Set - Single 6-rib serpentine crank and water pump pulley, lines up with stock alternator spacing.

[Read More](#)

**Price:** \$600.00



## PB18032 BILLET ALUMINUM CRANK AND WATER PUMP PULLEY SET, 2-GROOVE PS / AC, WITH SMOG ('68/'69 AND '71-'73 STYLE)

**SKU:** PB18032

3 groove crank, 2 groove WP

[Read More](#)

**Price:** \$600.00



## PB18031 BILLET ALUMINUM CRANK AND WATER PUMP PULLEY SET, 2-GROOVE PS / AC, NON-SMOG (1970 STYLE)

**SKU:** PB18031

3 groove crank, 1 groove WP

[Read More](#)

**Price:** \$600.00







## PB18023 BILLET ALUMINUM CRANK AND WATER PUMP PULLEYS, SINGLE GROOVE PS / AC NON-SMOG, WITH OVERDRIVE WP

**SKU:** PB18023

2 groove crank, 1 groove OD WP

[Read More](#)

**Price:** \$600.00



## PB18022 BILLET ALUMINUM CRANK AND WATER PUMP PULLEYS, SINGLE GROOVE PS / AC, WITH OR WITHOUT SMOG

**SKU:** PB18022

2 groove crank, 2 groove WP

[Read More](#)

**Price:** \$600.00



## PB18021 BILLET ALUMINUM CRANK AND WATER PUMP PULLEY SET, NON-SMOG (1974-UP STYLE)

**SKU:** PB18021

2 groove crank, 1 groove WP

[Read More](#)

**Price:** \$599.00



## **PB16102 BILLET ALUMINUM OVERDRIVE WATER PUMP PULLEY**

**SKU:** PB16102

1 groove OD WP pulley

[Read More](#)

**Price:** \$160.00



## **PB13001 BILLET ALUMINUM TIMING POINTER**

**SKU:** PB13001

[Read More](#)

**Price:** \$65.00



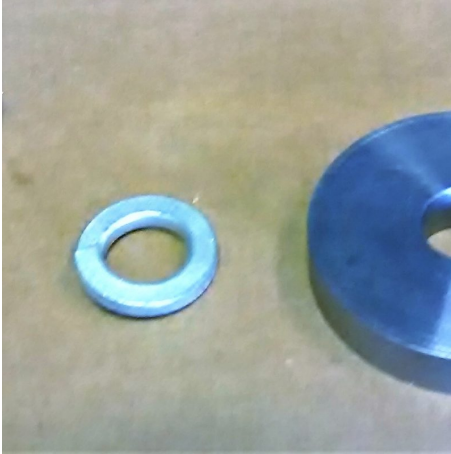
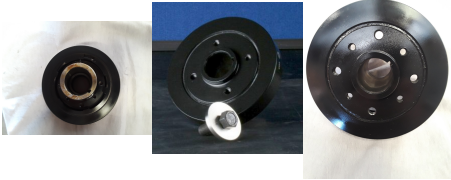
## **PB12306 HARMONIC DAMPER W/ HUB, SFI CERTIFIED**

**SKU:** PB12306

**SFI Certified One-Piece Harmonic Vibration Damper**

[Read More](#)

**Price:** \$390.00



## PB11122 CRANK HUB BOLT AND WASHER KIT

**SKU:** PB11122

**Crank Hub Bolt and Washer Kit** Correct washer to clear the pulley. Fits the front of the crankshaft, to positively retain the crank hub or damper (or dampener or balancer, as some folks call them).

[Read More](#)

**Price:** \$15.00



## PB11113 CRANK HUB SLEEVE

**SKU:** PB11113

Crank hub sealing surface repair sleeve.

[Read More](#)

**Price:** \$95.00

## AC COMPONENTS



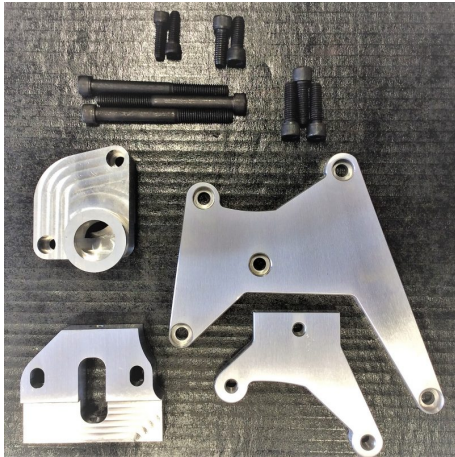
### PB34000 R4 BRACKET KIT BILLET ALUMINUM

**SKU:** PB34000

Billet Aluminum

[Read More](#)

**Price:** \$324.00



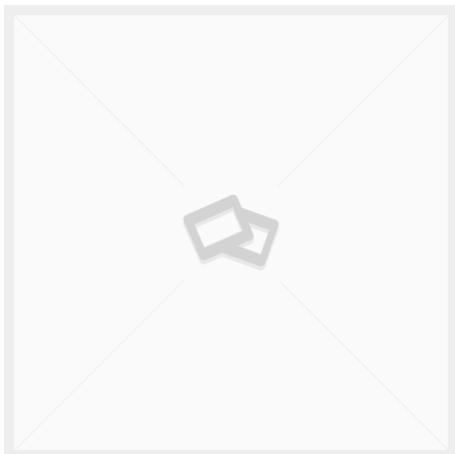
### PB32102 R4 CLUTCH COVER ALTERNATE RETAINER FITTING

**SKU:** PB32102

For use with PB32101 clutch cover IF the included retainer fitting can't be used.

[Read More](#)

**Price:** \$20.00





## **PB30411 R4 AC COMPRESSOR NEW (NOT REBUILT), SINGLE V-BELT**

**SKU:** PB30411

Fits '80-'85 368 CID engines with OE AC brackets and '68-'79 472 / 500 / 425 CID engines with Billet PB34000 aftermarket brackets. Single V-belt groove for use with OE '74-'85 pulleys or Billet PB18021 / PB18022 aftermarket pulleys

[Read More](#)

**Price:** \$440.00

# ALTERNATOR

Alternators and related parts.



## WS66103 ALTERNATOR WIRING CONVERSION KIT

**SKU:** WS66103

### Alternator Wiring Conversion Kit

Plug-and-play kit for wiring a 3-wire (stock '73-up GM) internally regulated alternator, into vehicles original equipped with an externally regulated GM alternator (such as '62-'72 Cadillacs). Includes adapter plug for alternator and external-regulator-elimination-plug for the connector that used to plug into the external regulator.

[Read More](#)

**Price:** \$45.00

## PB82821 6-RIB SERPENTINE ALTERNATOR BELT - SHORTER BELT FOR 'C'-TYPE BRACKET

**SKU:** PB82821

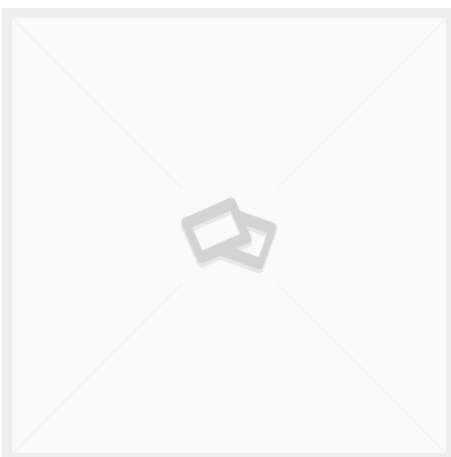
## 6-RIB SERPENTINE ALTERNATOR BELT

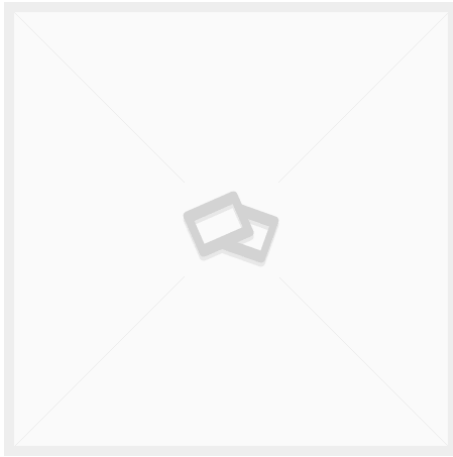
## ALTERNATOR AND WATER PUMP BELT FOR CADCO SERPENTINE SYSTEM

This belt drives the alternator and water pump, and fits the [PB18763](#) (3-belt) serpentine pulley kit and the ProCharger kit, with mild steel or stainless steel 'C' type brackets.

[Read More](#)

**Price:** \$45.00





## **PB82820 6-RIB SERPENTINE ALTERNATOR BELT - STANDARD LENGTH**

**SKU:** PB82820

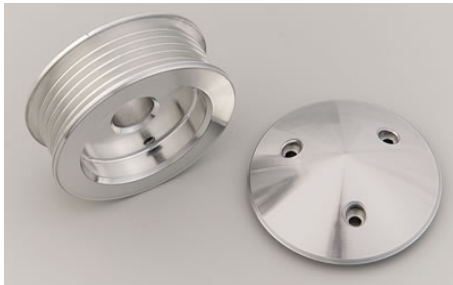
## **6-RIB SERPENTINE ALTERNATOR BELT**

## **ALTERNATOR AND WATER PUMP BELT FOR CADCO SERPENTINE SYSTEM**

This belt drives the alternator and water pump, and fits the [PB18763](#) (3-belt) serpentine pulley kit and the ProCharger kit, with stock or billet aluminum alternator brackets.

[Read More](#)

**Price:** \$45.00



## **PB62510 BILLET SERPENTINE ALTERNATOR PULLEY**

**SKU:** PB62510

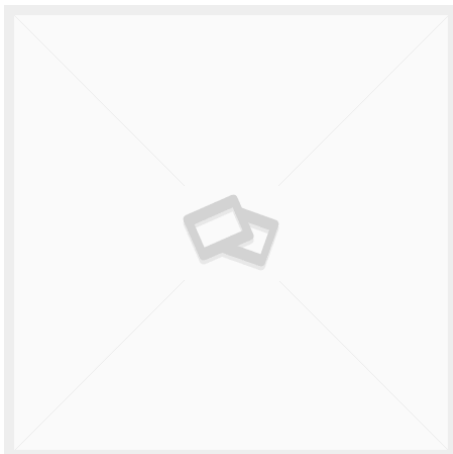
## **BILLET SERPENTINE ALTERNATOR PULLEY**

## **BILLET ALUMINUM 6-RIB SERPENTINE ALTERNATOR PULLEY WITH NOSE COVER.**

Fits '62-'85 390, 429, 472, 500, 425, and 368 engines with factory alternator, or anything with a 10SI / 12SI alternator.

[Read More](#)

**Price:** \$110.00



## **PB62311 CHROME SERPENTINE ALTERNATOR PULLEY**

**SKU:** PB62311

**Chrome serpentine alternator pulley** without fan. Fits most '62-'79 alternators and works with most stock fans.

[Read More](#)

**Price:** \$30.00

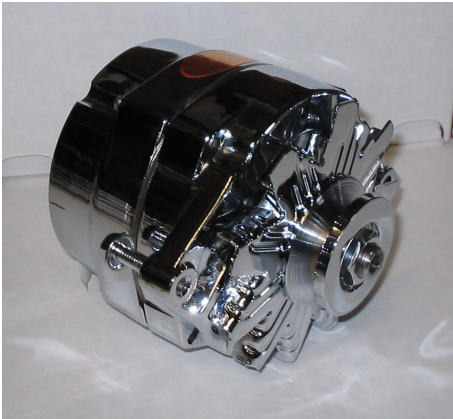


## **PB60313 CHROME ONE WIRE ALTERNATOR W/SERPENTINE PULLEY**

**SKU:** PB60313

[Read More](#)

**Price:** \$220.00



## **PB60312 CHROME ALTERNATOR**

**SKU:** PB60312

[Read More](#)

**Price:** \$260.00



## BELTS



### **PB82820 6-RIB SERPENTINE ALTERNATOR BELT - STANDARD LENGTH**

**SKU:** PB82820

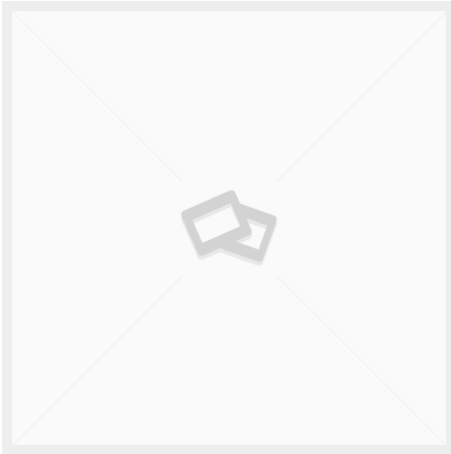
### **6-RIB SERPENTINE ALTERNATOR BELT**

### **ALTERNATOR AND WATER PUMP BELT FOR CADCO SERPENTINE SYSTEM**

This belt drives the alternator and water pump, and fits the [PB18763](#) (3-belt) serpentine pulley kit and the ProCharger kit, with stock or billet aluminum alternator brackets.

[Read More](#)

**Price:** \$45.00



# BRACKETS



## PB64500 BILLET ALUMINUM ALTERNATOR BRACKET KIT

**SKU:** PB64500  
[Read More](#)

**Price:** \$275.00



## PB64421 STAINLESS ALTERNATOR BRACKET KIT

**SKU:** PB64421  
[Read More](#)

**Price:** \$145.00



## PB64120 HIGH MOUNT ALTERNATOR BRACKET KIT

**SKU:** PB64120

[Read More](#)

**Price:** \$95.00



## PB34000 R4 BRACKET KIT BILLET ALUMINUM

**SKU:** PB34000

Billet Aluminum

[Read More](#)

**Price:** \$324.00

# CRANK AND WATER PUMP PULLEYS



## PB18763 CRANK AND WATER PUMP PULLEYS, MULTI-SERPENTINE

**SKU:** PB18763

**Crank and Water Pump** Serpentine Crank and Water Pump Pulleys

Made in USA

Billet Aluminum Pulley Set - Triple 6-rib serpentine crank and single serpentine water pump pulley, lines up with stock alternator, PS, and AC spacing. The 3rd belt location can be used to drive other accessories, such as a 2nd alternator, a smog pump, an air compressor, or a ProCharger.

[Read More](#)

**Price:** \$625.00



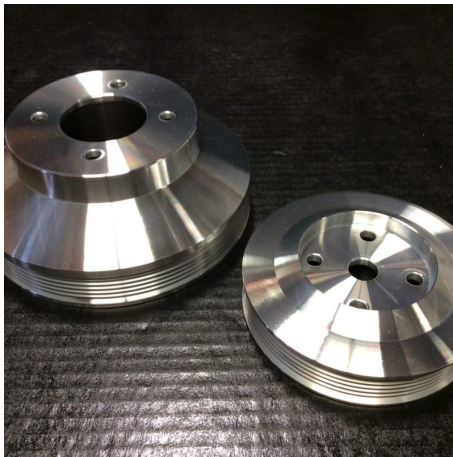
## PB18760 CRANK AND WATER PUMP PULLEYS, SINGLE SERPENTINE

**SKU:** PB18760

Billet Aluminum Pulley Set - Single 6-rib serpentine crank and water pump pulley, lines up with stock alternator spacing.

[Read More](#)

**Price:** \$600.00





## PB18032 BILLET ALUMINUM CRANK AND WATER PUMP PULLEY SET, 2-GROOVE PS / AC, WITH SMOG ('68/'69 AND '71-'73 STYLE)

**SKU:** PB18032

3 groove crank, 2 groove WP

[Read More](#)

**Price:** \$600.00



## PB18031 BILLET ALUMINUM CRANK AND WATER PUMP PULLEY SET, 2-GROOVE PS / AC, NON-SMOG (1970 STYLE)

**SKU:** PB18031

3 groove crank, 1 groove WP

[Read More](#)

**Price:** \$600.00



## PB18023 BILLET ALUMINUM CRANK AND WATER PUMP PULLEYS, SINGLE GROOVE PS / AC NON-SMOG, WITH OVERDRIVE WP

**SKU:** PB18023

2 groove crank, 1 groove OD WP

[Read More](#)

**Price:** \$600.00



## PB18022 BILLET ALUMINUM CRANK AND WATER PUMP PULLEYS, SINGLE GROOVE PS / AC, WITH OR WITHOUT SMOG

**SKU:** PB18022

2 groove crank, 2 groove WP

[Read More](#)

**Price:** \$600.00



## PB18021 BILLET ALUMINUM CRANK AND WATER PUMP PULLEY SET, NON-SMOG (1974-UP STYLE)

**SKU:** PB18021

2 groove crank, 1 groove WP

[Read More](#)

**Price:** \$599.00



## PB16102 BILLET ALUMINUM OVERDRIVE WATER PUMP PULLEY

**SKU:** PB16102

1 groove OD WP pulley

[Read More](#)

**Price:** \$160.00

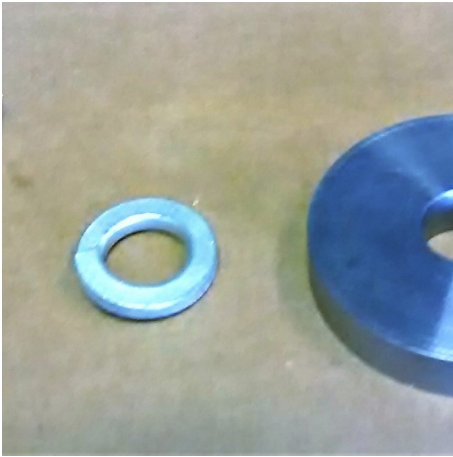


## PB13001 BILLET ALUMINUM TIMING POINTER

**SKU:** PB13001

[Read More](#)

**Price:** \$65.00



## PB11122 CRANK HUB BOLT AND WASHER KIT

**SKU:** PB11122

**Crank Hub Bolt and Washer Kit** Correct washer to clear the pulley. Fits the front of the crankshaft, to positively retain the crank hub or damper (or dampener or balancer, as some folks call them).

[Read More](#)

**Price:** \$15.00



## PB11113 CRANK HUB SLEEVE

**SKU:** PB11113

Crank hub sealing surface repair sleeve.

[Read More](#)

**Price:** \$95.00

# POWER STEERING

Power steering pumps, pulleys, brackets, belts, and other related parts.



## PB54311 POWER STEERING PUMP, CHROME, WITH KEYED SHAFT

**SKU:** PB54311

New Replacement Power Steering Pump, Chrome, with Keyed Shaft for Keyway and Nut Style Pulleys.

Fits all stock '68-'85 472 / 500 / 425 / 368 brackets, and most '63-'67 390 / 429 brackets originally equipped with a standard Saginaw Type 1 style pump. Fits all stock 73-older pulleys and aftermarket keyway type pulleys. Includes reservoir (installed). Finish is black paint on the pump body, with a chrome reservoir. Pulley and bracket not included.

[Read More](#)

**Price:** \$230.00

## PB54211 POWER STEERING PUMP, BLACK, WITH KEYED SHAFT

**SKU:** PB54211

New Replacement Power Steering Pump with Keyed Shaft for Keyway and Nut Style Pulleys.

Fits all stock '68-'85 472 / 500 / 425 / 368 brackets, and most '63-'67 390 / 429 brackets originally equipped with a standard Saginaw Type 1 style pump. Fits all stock 73-older pulleys and aftermarket keyway type pulleys. Includes reservoir (installed). Finish is black paint. Pulley and bracket not included.

[Read More](#)

**Price:** \$195.00







## PB53652 BILLET SERPENTINE PRESS FIT POWER STEERING PULLEY

**SKU:** PB53652

**Power Steering Pulley** Billet Aluminum, smoothie Serpentine, press fit. Made in USA

[Read More](#)

**Price:** \$185.00

## PB53621 STEEL SERPENTINE PRESS FIT POWER STEERING PULLEY

**SKU:** PB53621

**Power Steering Pulley** Steel Serpentine, press fit. Made in USA

[Read More](#)

**Price:** \$80.00





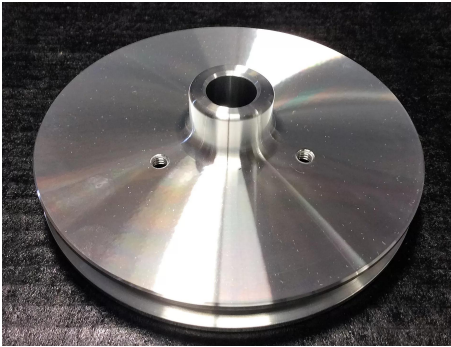
## PB52651 BILLET SERPENTINE KEYWAY POWER STEERING PULLEY

**SKU:** PB52651

**Power Steering Pulley** Billet Aluminum, smoothie Serpentine, Keyway shaft with nut. Made in USA

[Read More](#)

**Price:** \$185.00



## PB51153 BILLET 1 GROOVE PRESS FIT POWER STEERING PULLEY

**SKU:** PB51153

Billet Aluminum, smoothie Single groove, Press Fit. Made in USA

[Read More](#)

**Price:** \$130.00



## PB51122 STEEL 1 GROOVE PRESS FIT POWER STEERING PULLEY

**SKU:** PB51122

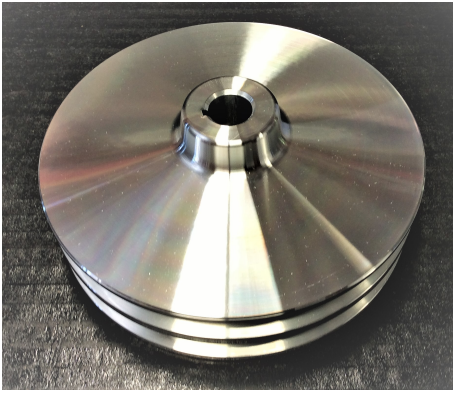
**PB 1515 Power Steering Pulley** Black Steel

Single groove, Press fit style.

Factory replacement for most '74-'85 472 / 500 / 425 / 368 engines.

[Read More](#)

**Price:** \$40.00



## **PB50254 BILLET 2 GROOVE KEYWAY POWER STEERING PULLEY**

**SKU:** PB50254

Billet Aluminum, smoothie  
Dual groove, Keyway Style. Made in USA

[Read More](#)

**Price:** \$130.00



## **PB50223 STEEL 2 GROOVE KEYWAY POWER STEERING PULLEY**

**SKU:** PB50223

Dual groove, keyway shaft/ nut or Press fit style.

[Read More](#)

**Price:** \$35.00





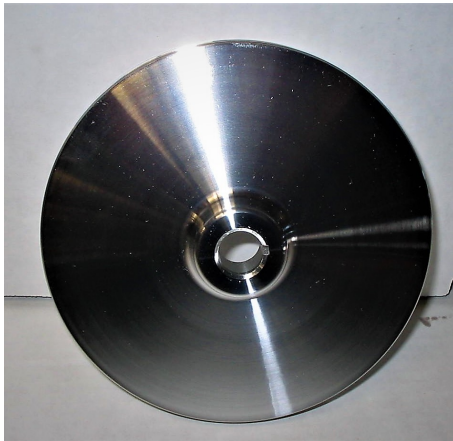
## PB50152 BILLET 1 GROOVE KEYWAY POWER STEERING PULLEY

**SKU:** PB50152

Billet Aluminum, 5 holes  
Single groove, keyway shaft/ nut style.

[Read More](#)

**Price:** \$85.00



## PB50151 BILLET 1 GROOVE KEYWAY POWER STEERING PULLEY

**SKU:** PB50151

Billet Aluminum, smoothie  
Single groove, Keyway shaft with nut. Made in USA

[Read More](#)

**Price:** \$130.00



## PB50121 STEEL 1 GROOVE KEYWAY POWER STEERING PULLEY

**SKU:** PB50121

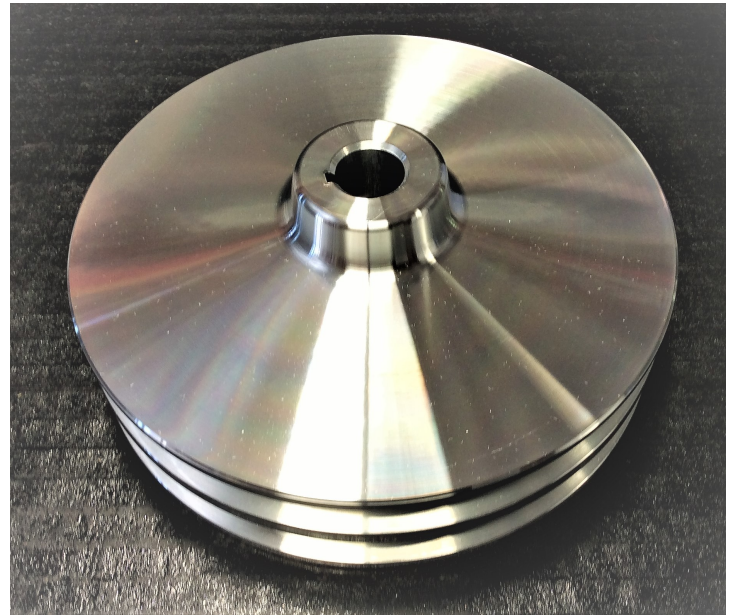
**PB 1515 Power Steering Pulley** Black Steel  
Single groove, keyway shaft/ nut or Press fit style.

[Read More](#)

**Price:** \$40.00

# PULLEYS AND RELATED PARTS

Pulleys - serpentine pulleys, v-belt pulleys, timing pointers, etc.



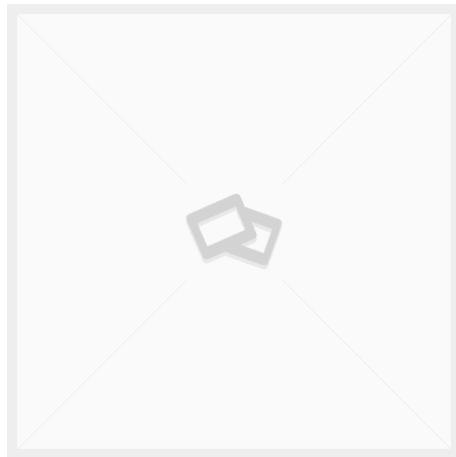
## PB62311 CHROME SERPENTINE ALTERNATOR PULLEY

**SKU:** PB62311

**Chrome serpentine alternator pulley** without fan. Fits most '62-'79 alternators and works with most stock fans.

[Read More](#)

**Price:** \$30.00



## PB62130 DUAL BELT ALTERNATOR PULLEY

**SKU:** PB62130

(steel)

[Read More](#)

**Price:** \$17.00





## PB61523 ALTERNATOR PULLEY AND FAN

**SKU:** PB61523

Billet Aluminum

[Read More](#)

**Price:** \$130.00



## PB61522 ALTERNATOR PULLEY AND FAN

**SKU:** PB61522

Billet Aluminum (curved blade style)

[Read More](#)

**Price:** \$95.00



## PB53652 BILLET SERPENTINE PRESS FIT POWER STEERING PULLEY

**SKU:** PB53652

**Power Steering Pulley** Billet Aluminum, smoothie Serpentine, press fit. Made in USA

[Read More](#)

**Price:** \$185.00



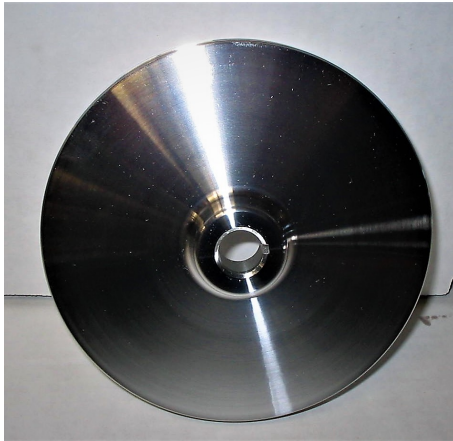
## PB53621 STEEL SERPENTINE PRESS FIT POWER STEERING PULLEY

**SKU:** PB53621

**Power Steering Pulley** Steel  
Serpentine, press fit. Made in USA

[Read More](#)

**Price:** \$80.00



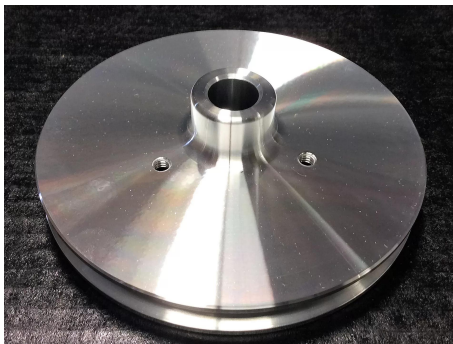
## PB52651 BILLET SERPENTINE KEYWAY POWER STEERING PULLEY

**SKU:** PB52651

**Power Steering Pulley** Billet Aluminum, smoothie  
Serpentine, Keyway shaft with nut. Made in USA

[Read More](#)

**Price:** \$185.00



## PB51153 BILLET 1 GROOVE PRESS FIT POWER STEERING PULLEY

**SKU:** PB51153

Billet Aluminum, smoothie  
Single groove, Press Fit. Made in USA

[Read More](#)

**Price:** \$130.00



## PB51122 STEEL 1 GROOVE PRESS FIT POWER STEERING PULLEY

**SKU:** PB51122

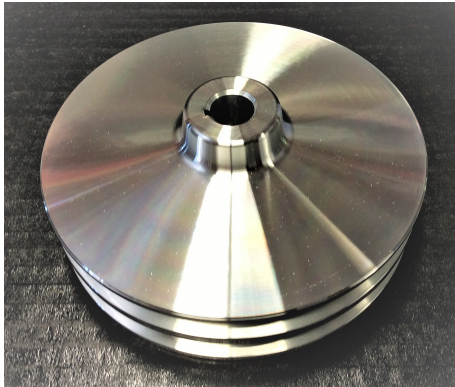
**PB 1515 Power Steering Pulley** Black Steel

Single groove, Press fit style.

Factory replacement for most '74-'85 472 / 500 / 425 / 368 engines.

[Read More](#)

**Price:** \$40.00



## PB50254 BILLET 2 GROOVE KEYWAY POWER STEERING PULLEY

**SKU:** PB50254

Billet Aluminum, smoothie

Dual groove, Keyway Style. Made in USA

[Read More](#)

**Price:** \$130.00



## PB50223 STEEL 2 GROOVE KEYWAY POWER STEERING PULLEY

**SKU:** PB50223

Dual groove, keyway shaft/ nut or Press fit style.

[Read More](#)

**Price:** \$35.00



## PB50152 BILLET 1 GROOVE KEYWAY POWER STEERING PULLEY

**SKU:** PB50152

Billet Aluminum, 5 holes  
Single groove, keyway shaft/ nut style.

[Read More](#)

**Price:** \$85.00





## **PB50151 BILLET 1 GROOVE KEYWAY POWER STEERING PULLEY**

**SKU:** PB50151

Billet Aluminum, smoothie  
Single groove, Keyway shaft with nut. Made in USA

[Read More](#)

**Price:** \$130.00



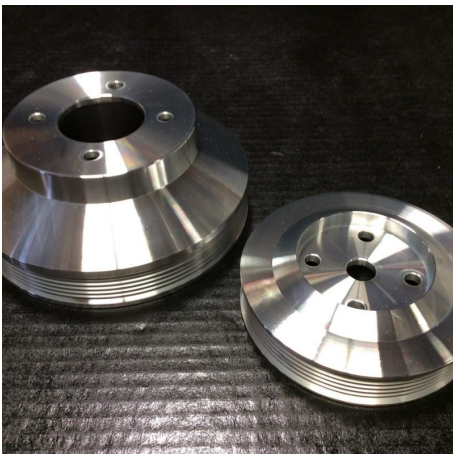
## **PB50121 STEEL 1 GROOVE KEYWAY POWER STEERING PULLEY**

**SKU:** PB50121

**PB 1515 Power Steering Pulley** Black Steel  
Single groove, keyway shaft/ nut or Press fit style.

[Read More](#)

**Price:** \$40.00



## **PB18760 CRANK AND WATER PUMP PULLEYS, SINGLE SERPENTINE**

**SKU:** PB18760

Billet Aluminum Pulley Set - Single 6-rib serpentine crank and water pump pulley, lines up with stock alternator spacing.

[Read More](#)

**Price:** \$600.00



## PB18032 BILLET ALUMINUM CRANK AND WATER PUMP PULLEY SET, 2-GROOVE PS / AC, WITH SMOG ('68/'69 AND '71-'73 STYLE)

**SKU:** PB18032

3 groove crank, 2 groove WP

[Read More](#)

**Price:** \$600.00



## PB18031 BILLET ALUMINUM CRANK AND WATER PUMP PULLEY SET, 2-GROOVE PS / AC, NON-SMOG (1970 STYLE)

**SKU:** PB18031

3 groove crank, 1 groove WP

[Read More](#)

**Price:** \$600.00



## PB18021 BILLET ALUMINUM CRANK AND WATER PUMP PULLEY SET, NON-SMOG (1974-UP STYLE)

**SKU:** PB18021

2 groove crank, 1 groove WP

[Read More](#)

**Price:** \$599.00



## PB13001 BILLET ALUMINUM TIMING POINTER

**SKU:** PB13001

[Read More](#)

**Price:** \$65.00

# SERPENTINE DRIVE KITS AND PARTS



## WS66103 ALTERNATOR WIRING CONVERSION KIT

SKU: WS66103

### Alternator Wiring Conversion Kit

Plug-and-play kit for wiring a 3-wire (stock '73-up GM) internally regulated alternator, into vehicles original equipped with an externally regulated GM alternator (such as '62-'72 Cadillacs). Includes adapter plug for alternator and external-regulator-elimination-plug for the connector that used to plug into the external regulator.

[Read More](#)

Price: \$45.00

## PB82821 6-RIB SERPENTINE ALTERNATOR BELT - SHORTER BELT FOR 'C'-TYPE BRACKET

SKU: PB82821

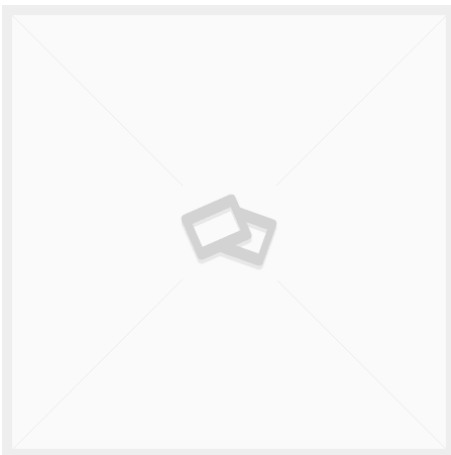
### 6-RIB SERPENTINE ALTERNATOR BELT

## ALTERNATOR AND WATER PUMP BELT FOR CADCO SERPENTINE SYSTEM

This belt drives the alternator and water pump, and fits the [PB18763](#) (3-belt) serpentine pulley kit and the ProCharger kit, with mild steel or stainless steel 'C' type brackets.

[Read More](#)

Price: \$45.00



## PB82820 6-RIB SERPENTINE ALTERNATOR BELT - STANDARD LENGTH

SKU: PB82820

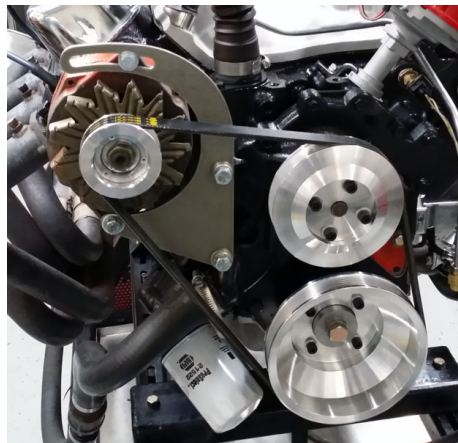
## 6-RIB SERPENTINE ALTERNATOR BELT

## ALTERNATOR AND WATER PUMP BELT FOR CADCO SERPENTINE SYSTEM

This belt drives the alternator and water pump, and fits the [PB18763](#) (3-belt) serpentine pulley kit and the ProCharger kit, with stock or billet aluminum alternator brackets.

[Read More](#)

Price: \$45.00



## PB71773 SERPENTINE PULLEY AND BILLET BRACKET KIT WITH POLISHED ALUMINUM 140 AMP ALTERNATOR PB71773

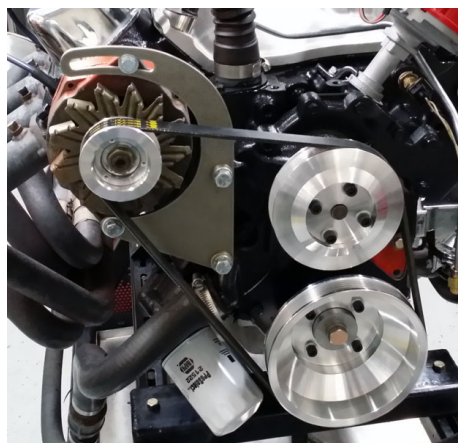
SKU: PB71773

This kit includes billet aluminum crank and water pump pulleys, SS crank and water pump pulley bolts, our billet aluminum alternator bracket kit, and a polished aluminum 140-Amp 1-wire alternator with billet aluminum pulley.

Note: Includes polished alternator, rather than the un-chromed version in the picture.

[Read More](#)

Price: \$975.00



## PB71772 SERPENTINE PULLEY AND BRACKET KIT WITH CHROME 105 AMP ALTERNATOR

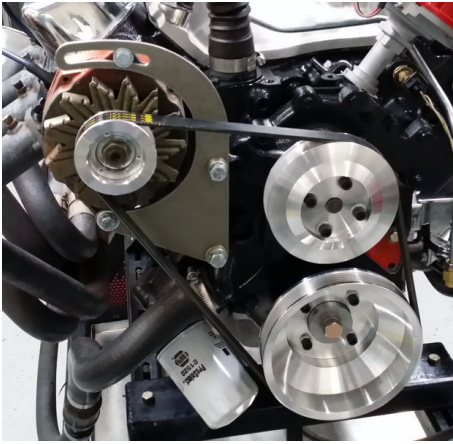
SKU: PB71772

This kit includes billet aluminum crank and water pump pulleys, SS crank and water pump pulley bolts, our stainless alternator bracket kit, and a chrome 105-Amp 1-wire alternator with chrome pulley.

Note: Includes chrome alternator, rather than the un-chromed version in the picture.

[Read More](#)

Price: \$625.00



## **PB71771 SERPENTINE PULLEY AND BRACKET KIT FOR WATER PUMP AND ALTERNATOR**

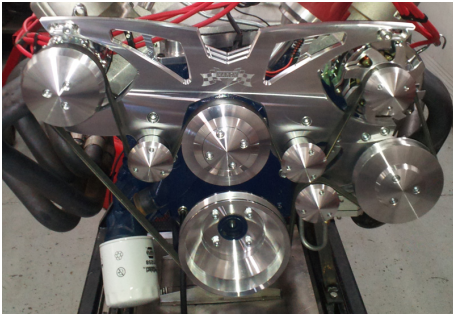
**SKU:** PB71771

This kit includes billet aluminum crank, water pump, and alternator pulleys, SS crank and water pump pulley bolts, and our stainless alternator bracket kit.

This kit does not include an alternator.

[Read More](#)

**Price:** \$485.00



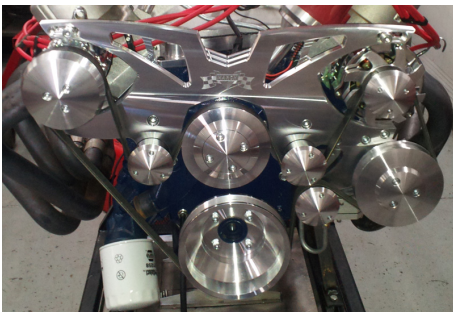
## **PB71705 SERPENTINE KIT - WATER PUMP, AC, ALTERNATOR (140 AMP) & POWER STEERING W/ FLOWKOOLER WATER PUMP**

**SKU:** PB71705

**Serpentine kit for water pump, AC, 140 Amp alternator, and power steering**

[Read More](#)

**Price:** \$2,560.00



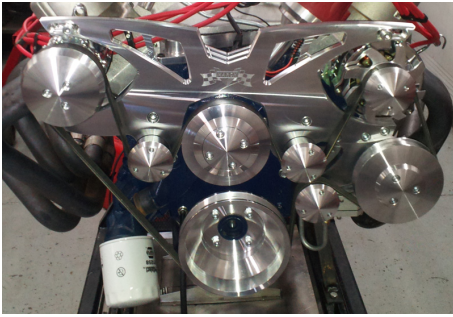
## **PB71704 SERPENTINE KIT - WATER PUMP, AC, ALTERNATOR (140 AMP) AND POWER STEERING**

**SKU:** PB71704

**Serpentine kit for water pump, AC, 140 Amp alternator, and power steering**

[Read More](#)

**Price:** \$2,460.00



## PB71702 SERPENTINE KIT - WATER PUMP, AC, ALTERNATOR (105 AMP) & POWER STEERING

**SKU:** PB71702

**Serpentine kit for water pump, AC, 105 Amp alternator, and power steering**

[Read More](#)

**Price:** \$1,975.00



## PB71701 SERPENTINE KIT - WATER PUMP, AC, & ALTERNATOR (105 AMP)

**SKU:** PB71701

**Serpentine kit for water pump, AC, and 105 Amp alternator**

[Read More](#)

**Price:** \$1,675.00



## PB64500 BILLET ALUMINUM ALTERNATOR BRACKET KIT

**SKU:** PB64500

[Read More](#)

**Price:** \$275.00





## PB64421 STAINLESS ALTERNATOR BRACKET KIT

**SKU:** PB64421

[Read More](#)

**Price:** \$145.00

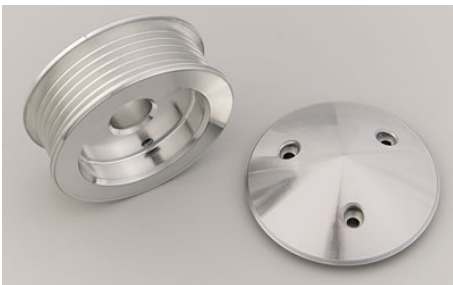


## PB64120 HIGH MOUNT ALTERNATOR BRACKET KIT

**SKU:** PB64120

[Read More](#)

**Price:** \$95.00



## PB62510 BILLET SERPENTINE ALTERNATOR PULLEY

**SKU:** PB62510

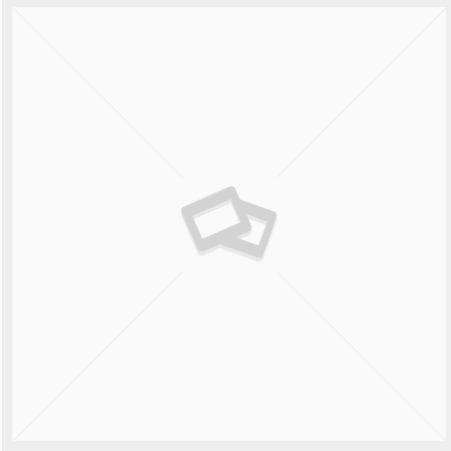
## BILLET SERPENTINE ALTERNATOR PULLEY

## BILLET ALUMINUM 6-RIB SERPENTINE ALTERNATOR PULLEY WITH NOSE COVER.

Fits '62-'85 390, 429, 472, 500, 425, and 368 engines with factory alternator, or anything with a 10SI / 12SI alternator.

[Read More](#)

**Price:** \$110.00



## PB62311 CHROME SERPENTINE ALTERNATOR PULLEY

**SKU:** PB62311

**Chrome serpentine alternator pulley** without fan. Fits most '62-'79 alternators and works with most stock fans.

[Read More](#)

**Price:** \$30.00

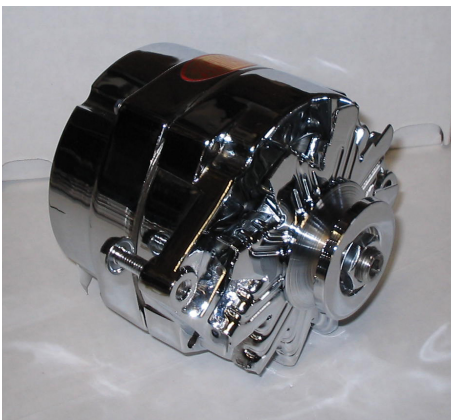


## PB60313 CHROME ONE WIRE ALTERNATOR W/SERPENTINE PULLEY

**SKU:** PB60313

[Read More](#)

**Price:** \$220.00



## PB60312 CHROME ALTERNATOR

**SKU:** PB60312

[Read More](#)

**Price:** \$260.00



## PB53652 BILLET SERPENTINE PRESS FIT POWER STEERING PULLEY

**SKU:** PB53652

**Power Steering Pulley** Billet Aluminum, smoothie Serpentine, press fit. Made in USA

[Read More](#)

**Price:** \$185.00



## PB53621 STEEL SERPENTINE PRESS FIT POWER STEERING PULLEY

**SKU:** PB53621

**Power Steering Pulley** Steel Serpentine, press fit. Made in USA

[Read More](#)

**Price:** \$80.00



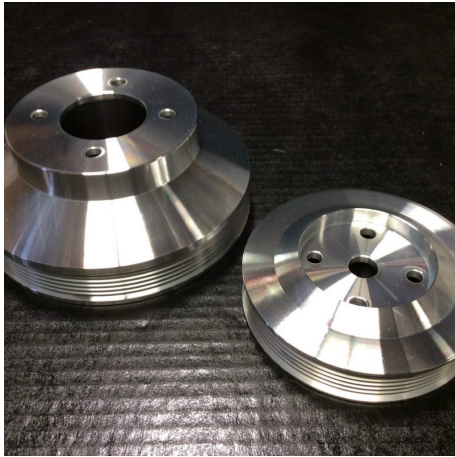
## PB52651 BILLET SERPENTINE KEYWAY POWER STEERING PULLEY

**SKU:** PB52651

**Power Steering Pulley** Billet Aluminum, smoothie Serpentine, Keyway shaft with nut. Made in USA

[Read More](#)

**Price:** \$185.00



## PB18760 CRANK AND WATER PUMP PULLEYS, SINGLE SERPENTINE

**SKU:** PB18760

Billet Aluminum Pulley Set - Single 6-rib serpentine crank and water pump pulley, lines up with stock alternator spacing.

[Read More](#)

**Price:** \$600.00

# INDEX

## P

- PB11113 Crank Hub Sleeve 18, 30
- PB11122 Crank Hub Bolt and Washer Kit 18, 30
- PB12306 Harmonic Damper w/ Hub, SFI certified 17
- PB13001 Billet Aluminum Timing Pointer 17, 30, 43
- PB16102 Billet Aluminum Overdrive Water Pump Pulley 17, 29
- PB18021 Billet Aluminum Crank and Water Pump Pulley set, Non-Smog (1974-up Style) 16, 29, 42
- PB18022 Billet Aluminum Crank and Water Pump Pulleys, Single Groove PS / AC, With or Without Smog 16, 29
- PB18023 Billet Aluminum Crank and Water Pump Pulleys, Single Groove PS / AC non-smog, With Overdrive WP 16, 28
- PB18031 Billet Aluminum Crank and Water Pump Pulley Set, 2-Groove PS / AC, Non-Smog (1970 Style) 15, 28, 42
- PB18032 Billet Aluminum Crank and Water Pump Pulley set, 2-Groove PS / AC, With Smog ('68/'69 and '71-'73 Style) 15, 28, 42
- PB18760 Crank and Water Pump Pulleys, Single Serpentine 15, 27, 41, 51
- PB18763 Crank and Water Pump Pulleys, Multi-Serpentine 14, 27
- PB30411 R4 AC Compressor New (not rebuilt), Single V-Belt 14, 20
- PB32102 R4 Clutch Cover Alternate retainer fitting 14, 19
- PB34000 R4 Bracket Kit Billet Aluminum 13, 19, 26
- PB50121 Steel 1 Groove Keyway Power Steering Pulley 13, 35, 41
- PB50151 Billet 1 Groove Keyway Power Steering Pulley 13, 35, 41
- PB50152 Billet 1 Groove Keyway Power Steering Pulley 12, 35, 40
- PB50223 Steel 2 Groove Keyway Power Steering Pulley 12, 34, 39
- PB50254 Billet 2 Groove Keyway Power Steering Pulley 11, 34, 39
- PB51122 Steel 1 Groove Press Fit Power Steering Pulley 11, 33, 39
- PB51153 Billet 1 Groove Press Fit Power Steering Pulley 11, 33, 38
- PB52651 Billet Serpentine Keyway Power Steering Pulley 10, 33, 38, 50
- PB53621 Steel Serpentine Press Fit Power Steering Pulley 10, 32, 38, 50
- PB53652 Billet Serpentine Press Fit Power Steering Pulley 10, 32, 37, 50
- PB54211 Power Steering Pump, Black, with Keyed Shaft 9, 31
- PB54311 Power Steering Pump, Chrome, with Keyed Shaft 9, 31
- PB60312 Chrome Alternator 8, 23, 49
- PB60313 Chrome One Wire Alternator W/Serpentine Pulley 8, 23, 49
- PB61522 Alternator Pulley and Fan 8, 37
- PB61523 Alternator Pulley and Fan 7, 37
- PB62130 Dual Belt Alternator Pulley 7, 36
- PB62311 Chrome Serpentine Alternator Pulley 7, 22, 36, 49
- PB62510 Billet Serpentine Alternator Pulley 6, 22, 48
- PB64120 High Mount Alternator Bracket Kit 6, 26, 48
- PB64421 Stainless Alternator Bracket Kit 6, 25, 48
- PB64500 Billet Aluminum Alternator Bracket Kit 5, 25, 47
- PB71701 Serpentine Kit - Water Pump, AC, & Alternator (105 Amp) 5, 47
- PB71702 Serpentine Kit - Water Pump, AC, Alternator (105 Amp) & Power Steering 5, 47
- PB71704 Serpentine Kit - Water Pump, AC, Alternator (140 Amp) and Power Steering 4, 46
- PB71705 Serpentine Kit - Water Pump, AC, Alternator (140 Amp) & Power Steering w/ Flowkooler Water Pump 4, 46
- PB71771 Serpentine pulley and bracket kit for water pump and alternator 4, 46
- PB71772 Serpentine pulley and bracket kit with chrome 105 Amp alternator 3, 45
- PB71773 Serpentine pulley and billet bracket kit with polished aluminum 140 Amp alternator PB71773 3, 45
- PB82820 6-Rib Serpentine Alternator Belt - Standard Length 3, 22, 24, 45
- PB82821 6-Rib Serpentine Alternator Belt - Shorter belt for 'C'-type bracket 2, 21, 44

## W

- WS66103 Alternator Wiring Conversion Kit 2, 21, 44